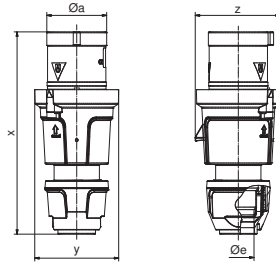
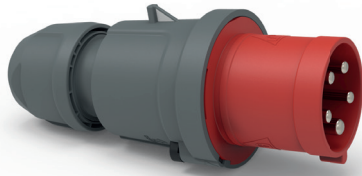


Plugs and Connectors 63A and 125A



Plug IP44

- Improved ergonomics, thanks to the new INNOLINQ design
- Contact carrier is made of high temperature resistant material
- Nickel-plated contacts
- Special gland, simultaneous cable gland and seal
- Screwless enclosure connection, self locking
- Protection degree IP44



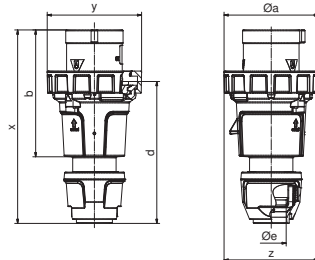
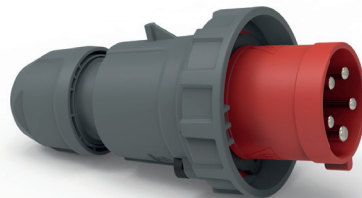
KONTEX ULTRA
MULTI GRIP

Execution	A	P	V	Art.-No.	VPE
QUICK CONNECT	63	4	400	210761	5
QUICK CONNECT	63	5	400	210765	5
Screw	63	3	230	2104	5
Screw	63	4	400	2151	5
Screw	63	5	400	2155	5

Ampere Polzahl	63 3	63 4	63 5
ø a	69,0	69,0	69,0
ø e	36,0	36,0	36,0
x	233,0	233,0	233,0
y	97,0	97,0	97,0
z	98,0	98,0	98,0
Cond. mm² min	6,0	6,0	6,0
Cond. mm² max	16,0	16,0	16,0

Plug IP67

- Improved ergonomics, thanks to the new INNOLINQ design
- Contact carrier is made of high temperature resistant material
- Nickel-plated contacts
- Special gland, simultaneous cable gland and seal
- Screwless enclosure connection, self locking
- Protection degree IP67



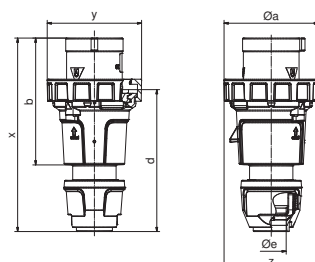
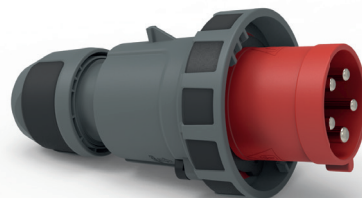
KONTEX ULTRA
MULTI GRIP

Execution	A	P	V	Art.-No.	VPE
QUICK CONNECT	63	4	400	210762	5
QUICK CONNECT	63	5	400	210766	5
Screw	63	3	230	2181	5
Screw	63	4	400	2185	5
Screw	63	5	400	2189	5
Screw	125	3	230	2191	5
Screw	125	4	400	2195	5
Screw	125	5	400	2199	5

Ampere Polzahl	63 3	63 4	63 5	125 3	125 4	125 5
ø a	114,0	114,0	114,0	126,0	126,0	126,0
b	153,0	153,0	153,0	171,0	171,0	171,0
d	171,0	171,0	171,0	198,0	198,0	198,0
ø e	36,0	36,0	36,0	50,0	50,0	50,0
x	233,0	233,0	233,0	268,0	268,0	268,0
y	114,0	114,0	114,0	126,0	126,0	126,0
z	114,0	114,0	114,0	126,0	126,0	126,0
Cond. mm² min	6,0	6,0	6,0	16,0	16,0	16,0
Cond. mm² max	16,0	16,0	16,0	50,0	50,0	50,0

Plug in INNOLINQ-Design with SUSTAINABLE-GRIP

- Improved ergonomics, thanks to the new INNOLINQ design
- Contact carrier is made of high temperature resistant material
- Nickel-plated contacts
- Special gland, simultaneous cable gland and seal
- Screwless enclosure connection, self locking
- Protection degree IP67
- with recyclable SUSTAINABLE-GRIP



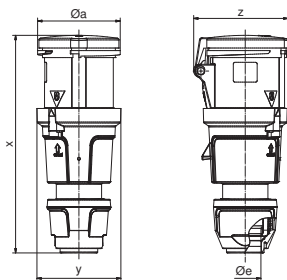
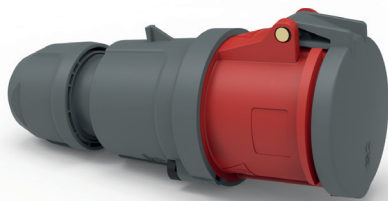
KONTEX ULTRA
SUSTAINABLE GRIP
MULTI GRIP

Execution	A	P	V	Art.-No.	VPE
QUICK CONNECT	63	4	400	210762-1	5
QUICK CONNECT	63	5	400	210766-1	5
Screw	63	3	230	2181-1	5
Screw	63	4	400	2185-1	5
Screw	63	5	400	2189-1	5
Screw	125	3	230	2191-1	5
Screw	125	4	400	2195-1	5
Screw	125	5	400	2199-1	5

Ampere Polzahl	63 3	63 4	63 5	125 3	125 4	125 5
ø a	114,0	114,0	114,0	126,0	126,0	126,0
b	153,0	153,0	153,0	171,0	171,0	171,0
d	171,0	171,0	171,0	198,0	198,0	198,0
ø e	36,0	36,0	36,0	50,0	50,0	50,0
x	233,0	233,0	233,0	268,0	268,0	268,0
y	114,0	114,0	114,0	126,0	126,0	126,0
z	114,0	114,0	114,0	126,0	126,0	126,0
Cond. mm² min	6,0	6,0	6,0	16,0	16,0	16,0
Cond. mm² max	16,0	16,0	16,0	50,0	50,0	50,0

Connector IP44

- Improved ergonomics, thanks to the new INNOLINQ design
- Contact carrier is made of high temperature resistant material
- Nickel-plated contacts
- Special gland, simultaneous cable gland and seal
- Screwless enclosure connection, self locking
- Protection degree IP44



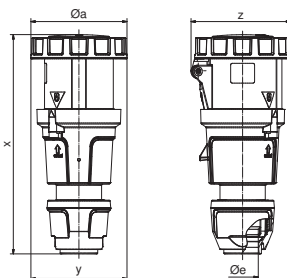
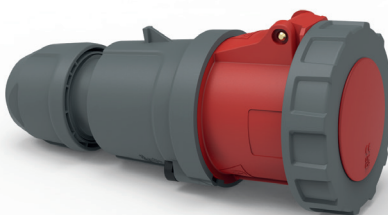
KONTEX ULTRA
MULTI GRIP

Execution	A	P	V	Art.-No.	VPE
QUICK CONNECT	63	4	400	310490	5
QUICK CONNECT	63	5	400	310494	5
Screw	63	3	230	3104	5
Screw	63	4	400	3151	5
Screw	63	5	400	3112	5

Ampere	63	63	63		
Polzahl	3	4	5		
ø a	95,0	95,0	95,0		
ø e	36,0	36,0	36,0		
x	251,0	251,0	251,0		
y	97,0	97,0	97,0		
z	109,0	109,0	109,0		
Cond. mm² min	6,0	6,0	6,0		
Cond. mm² max	16,0	16,0	16,0		

Connector IP67

- Improved ergonomics, thanks to the new INNOLINQ design
- Contact carrier is made of high temperature resistant material
- Nickel-plated contacts
- Special gland, simultaneous cable gland and seal
- Screwless enclosure connection, self locking
- Protection degree IP67



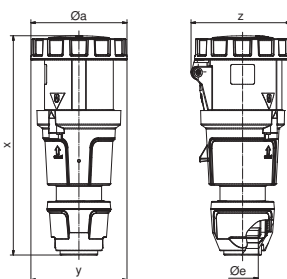
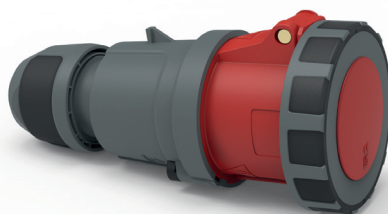
KONTEX ULTRA
MULTI GRIP

Execution	A	P	V	Art.-No.	VPE
QUICK CONNECT	63	4	400	310491	5
QUICK CONNECT	63	5	400	310495	5
Screw	63	3	230	3181	5
Screw	63	4	400	3185	5
Screw	63	5	400	3124	5
Screw	125	3	230	3191	5
Screw	125	4	400	3195	5
Screw	125	5	400	3199	5

Ampere	63	63	63	125	125	125
Polzahl	3	4	5	3	4	5
ø a	111,0	111,0	111,0	125,0	125,0	125,0
ø e	36,0	36,0	36,0	50,0	50,0	50,0
x	250,0	250,0	250,0	290,0	290,0	290,0
y	111,0	111,0	111,0	125,0	125,0	125,0
z	115,0	115,0	115,0	130,0	130,0	130,0
Cond. mm² min	6,0	6,0	6,0	16,0	16,0	16,0
Cond. mm² max	16,0	16,0	16,0	50,0	50,0	50,0

Connector IP67 with SUSTAINABLE-GRIP

- Improved ergonomics, thanks to the new INNOLINQ design
- Contact carrier is made of high temperature resistant material
- Nickel-plated contacts
- Special gland, simultaneous cable gland and seal
- Screwless enclosure connection, self locking
- Protection degree IP67
- with recyclable SUSTAINABLE-GRIP



KONTEX ULTRA
SUSTAINABLE GRIP
MULTI GRIP

Execution	A	P	V	Art.-No.	Qty
QUICK CONNECT	63	4	400	310491-1	5
QUICK CONNECT	63	5	400	310495-1	5
Screw	63	3	230	3181-1	5
Screw	63	4	400	3185-1	5
Screw	63	5	400	3124-1	5

Ampere	63	63	63	125	125	125
Polzahl	3	4	5	3	4	5
ø a	111,0	111,0	111,0	125,0	125,0	125,0
ø e	36,0	36,0	36,0	50,0	50,0	50,0
x	250,0	250,0	250,0	290,0	290,0	290,0
y	111,0	111,0	111,0	125,0	125,0	125,0
z	115,0	115,0	115,0	130,0	130,0	130,0
Cond. mm² min	6,0	6,0	6,0	16,0	16,0	16,0
Cond. mm² max	16,0	16,0	16,0	50,0	50,0	50,0

made
in
Germany



Simply. Well. Connected.

Bals Elektrotechnik GmbH & Co. KG
D-57399 Kirchhundem-Albaum
Phone: +49 27 23/771-0
Fax: +49 27 23/771-177/178
E-mail: info@bals.com
Internet: www.bals.com

Subject to technical modifications and typographical errors